

MARIJUANA IN OUR COMMUNITY

2016 Survey of Larimer County Residents



In 2012, Amendment 64 legalized recreational marijuana in the state of Colorado. Since legalization, the Health District has included survey questions regarding marijuana on both the 2013 and 2016 Community Health Survey.

HERE'S A CLOSER LOOK AT MARIJUANA USE IN OUR COMMUNITY

HOW DO WE COMPARE?



59%
OF LARIMER COUNTY
ADULTS HAVE EVER
USED
MARIJUANA

49%
OF COLORADO
ADULTS HAVE EVER
USED MARIJUANA*



43%
OF AMERICAN
ADULTS HAVE
EVER USED
MARIJUANA**

*2015 Behavioral Risk Factor Surveillance System Data

**2016 Gallup Poll

Increasing Marijuana Use

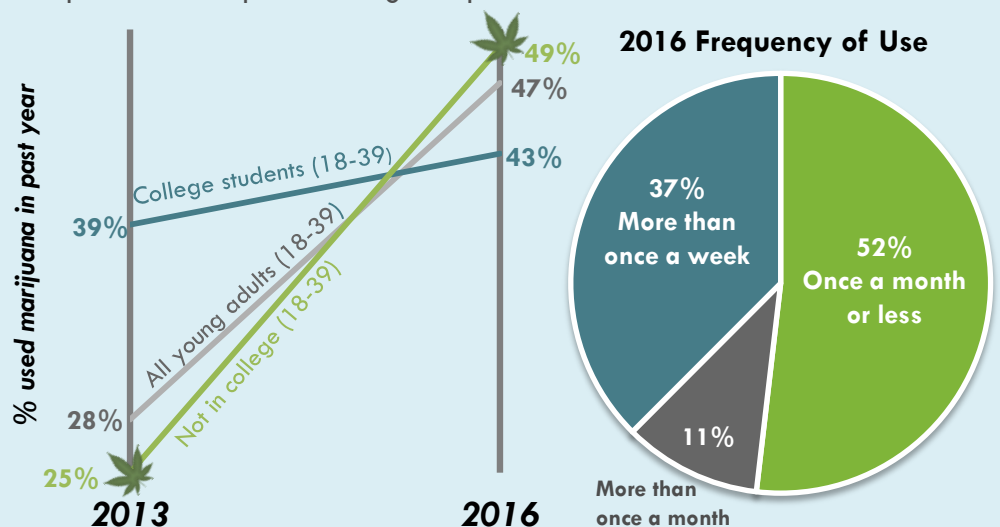
In 2013, 1 in 6 (17%) Larimer County residents (18 & older) reported using marijuana in the past year.

In 2016, almost **2 in 6 (32%)** adult residents used marijuana in the past year.



Young Adults & Marijuana

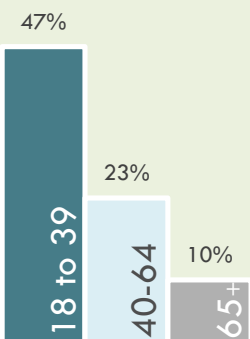
In 2016, **nearly half** of young adults age 18 to 39 reported using marijuana in the past year. The rate of marijuana use increased most dramatically among **young adults not in college**. The majority of young adult marijuana users reported using marijuana **once a month or less**.



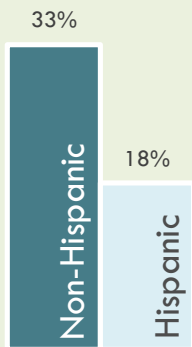
WHO IS MOST LIKELY TO USE?

% used marijuana in past year

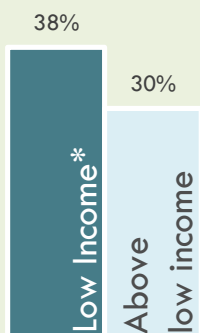
ADULTS, BY AGE



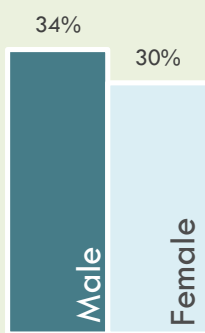
BY ETHNICITY



BY INCOME



BY GENDER

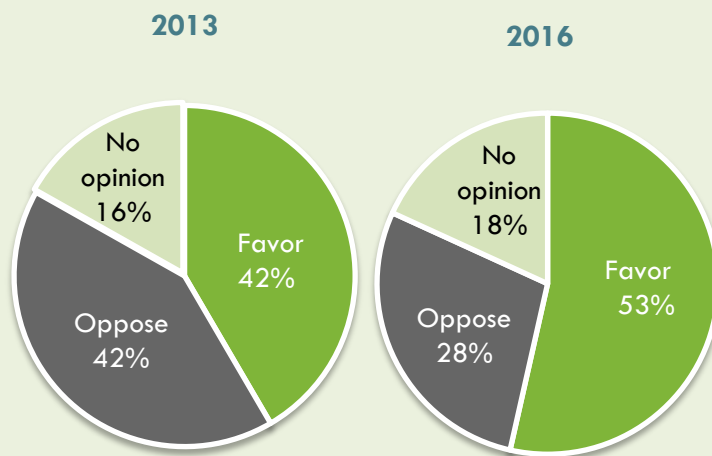


*Low income is household income less than 185% of the Federal Poverty Level.

POLICY AND ATTITUDE

“Would you favor or oppose policies that would allow operation of marijuana retail stores and cultivation facilities?”

Opposition decreased from 2013 to 2016



MARIJUANA AND HEALTH

Compared to those that have never used marijuana, recent marijuana users (past year) were **more** likely to:

✿ lack sufficient sleep.



✿ report binge drinking in the past 30 days.



✿ currently report depression, anxiety, or another mental health problem.



✿ have experienced pain most or every day.

